

# Professional system solutions

## References

### Austria

- International Airport Wien-Schwechat

### Finland

- Airport Oulu

### Germany

- Airports
- Berlin Tegel, Schönefeld
  - Bremen
  - Dresden
  - Düsseldorf
  - Erfurt
  - Frankfurt
  - Hamburg
  - Hannover
  - Köln/Bonn
  - München
  - Nürnberg
  - Stuttgart

### Greece

- Airport Athen

### Italy

- Airport Turin

### Libya

- Airport Tripolis

### Netherlands

- Airport Rotterdam

### Saudi Arabia

- Airport Khamis Mushayt
- Airport Medina
- Airport Tabuk
- Airport Taif
- International Airport Jeddah

### Switzerland

- Aéroport International de Genève
- Unique zurich airport Zürich

### Spain

- Airport Madrid-Barajas
- Palma de Mallorca Airport

### United Kingdom

- Shannon Airport

## Staffed offices nationwide



# Professional system solutions



**Application for public transport  
example: airports**

## Our system solutions:

### Security services

- banks and insurances
- facility management
- public authorities
- industry and trade
- penal institutions
- power plants & energy supply
- museums & galleries
- process monitoring

### Traffic

- aboard (ships)
- motorways, tunnels, traffic systems
- railways, inclines
- < airports >, harbours, waterways
- public transport

### Public places

- station forecourts
- shopping centres
- pedestrian zones, city surveillance
- stadium and arena

project planning /  
engineering

system  
components

customized  
requirements

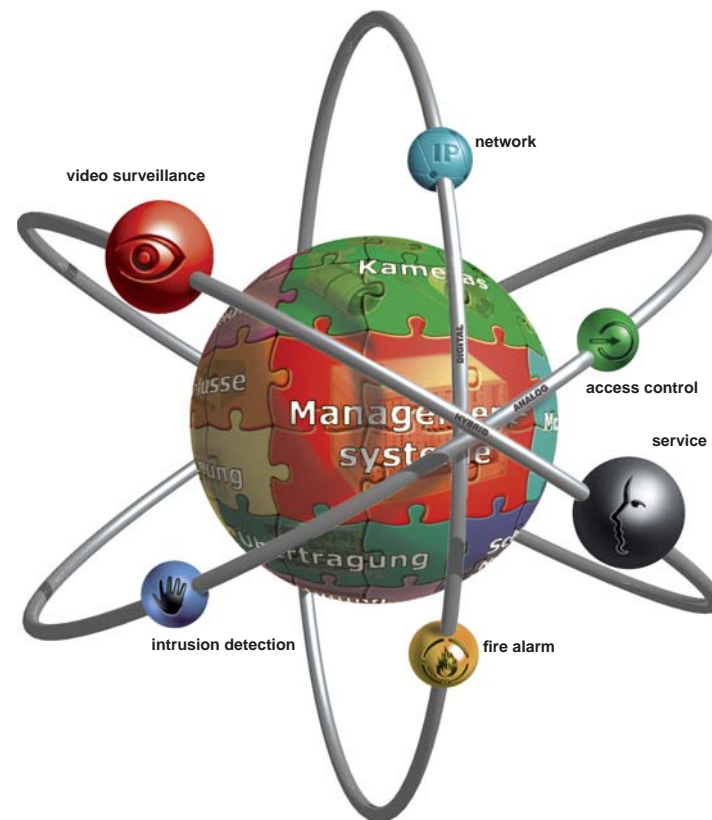
# Application for public transport example: airports



## Company

Design and production of sophisticated high-end CCTV components since 1952 makes us a most reliable partner for our customers and their future-proof requirements.

Our diversified portfolio allows delivery of customized security concepts worldwide.



<ul style="list-style-type: none"> <li>• CCTV system solutions and integration - stationary and mobile surveillance</li> </ul>	<ul style="list-style-type: none"> <li>• Transmission systems (analog/digital)</li> </ul>
<ul style="list-style-type: none"> <li>• Video management and alarm control centres</li> </ul>	<ul style="list-style-type: none"> <li>• Perimeter protection</li> </ul>
<ul style="list-style-type: none"> <li>• System surveillance cameras</li> </ul>	<ul style="list-style-type: none"> <li>• Video analysis / sensors</li> </ul>
<ul style="list-style-type: none"> <li>• Pan/tilt heads - dome</li> </ul>	<ul style="list-style-type: none"> <li>• Access control</li> </ul>
<ul style="list-style-type: none"> <li>• Burglar alarm</li> </ul>	<ul style="list-style-type: none"> <li>• Fire alarm</li> </ul>

## Performance: project planning / engineering

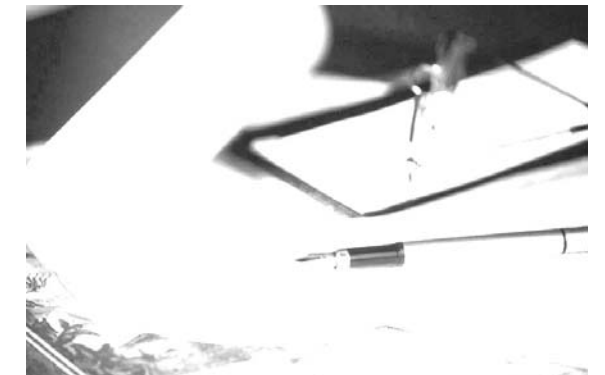
### Project planning

**Project design** according to individual customer requirements in terms of time, performance and costs:

- Development of detailed project plans including scope of supply, required capacities, materials, investments and schedules
- Feasibility analysis

### System design

- Definition of necessary materials and services for construction and setup of customized systems
- Coordination of involved departments and partner companies
- Documentation



### Engineering

- **System design** according to customer's requirements and project design data
- Plant verification considering functional and safety requirements
- Approval according to **DIN** and **VDE (EU)**
- Project and test documentation
- **Delivery** and **acceptance protocol**



# Application for public transport example: airports



## System components

	<b>High-speed pan/tilt head SNK globe/move</b> <ul style="list-style-type: none"> <li>• endless rotation • Panorama tour</li> <li>• mutable speed</li> <li>• 250 storable positions</li> <li>• Auto pan / swinging</li> </ul>	<b>DECT™ Security System DSS</b> <ul style="list-style-type: none"> <li>• multicellular communication system</li> <li>• Personal alarm signal functions</li> <li>• Telephony and messaging</li> <li>• automatic location and image activation</li> </ul>	
	<b>FAC 940 / L / L-IR</b> <ul style="list-style-type: none"> <li>• 1/2" interline hyper HAD CCD sensor</li> <li>• 440.000 pixel eff. • suitable for day and night</li> <li>• remote configuration via PC</li> <li>• intern. image memory • extr. light sensitivity</li> </ul>	<b>Multiprotokoll Router R3000w</b> <ul style="list-style-type: none"> <li>• integrated ADSL (2+) modem (Annex A/B)</li> <li>• automatic ISDN backup • supports 802.11 a/b/g/h standards with a gross transfer rate of 54 Mbit/s/VPN / IPSEC</li> </ul>	
	<b>VNS 102-MPEG4 advanced video codec</b> <ul style="list-style-type: none"> <li>• 2 FBAS in-/outputs • no fan</li> <li>• High image quality with small memory system load, 1 lip-sync bi-directional stereo-sound • 2 RS 485 interfaces</li> </ul>	<b>Digital monitor „multiview“</b> <ul style="list-style-type: none"> <li>• VGA video image representation</li> <li>• Full D1 representation of 2 up to 6 windows (with 25 fps) possible • flexible image representation with management system p.o.s.a.</li> </ul>	
	<b>Speed Vision Dome SVD 206</b> <ul style="list-style-type: none"> <li>• 27fold precisions lens • Privacy masking</li> <li>• ExDR • Panning speed 300°/sec</li> <li>• Panorama tour, 100 storable positions</li> <li>• endless 360° panning range</li> </ul>	<b>Switch 5400</b> <ul style="list-style-type: none"> <li>• 4-6 free slots</li> <li>• memory/processor: gigabit module ARM 9 with 200 MHz, 144 MB package buffer vol.</li> <li>• 288 GBps routing/switching capacity</li> </ul>	
	<b>Management system p.o.s.a.</b> <ul style="list-style-type: none"> <li>• open video- and occurrence management</li> <li>• Real time data exchange • Job handling</li> <li>• Alarm and failure management</li> <li>• System consistency</li> </ul>	<b>Network video recorder (NVR)</b> <ul style="list-style-type: none"> <li>• triplex mode for parallel recording, replay recording play and streaming of live video image with different image qualities (up to 25 fps)</li> </ul>	

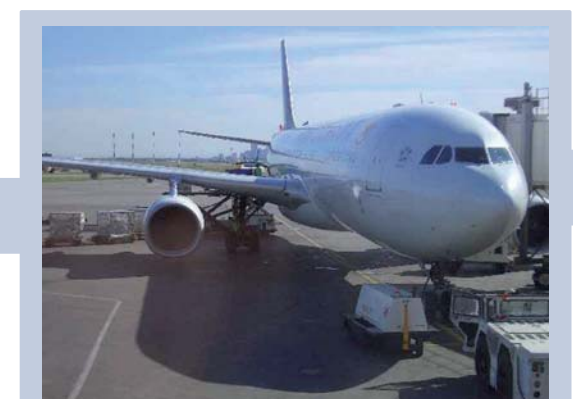
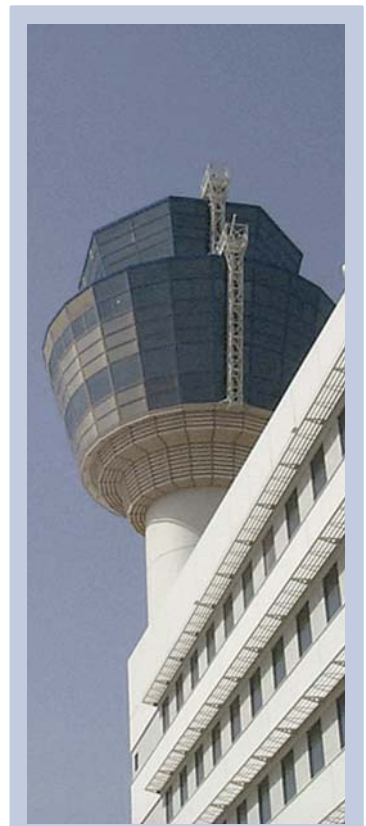
## Demands on security concepts

Air traffic on the rise, more and more passengers and the increased fear of terrorist attacks and violent acts necessitate modular security concepts.

Such security concepts must focus on passenger and ground staff needs for security without losing sight of economy and effectiveness. Different topologies and areas ask for customized concepts making allowance for all specific conditions.

Such concepts focus on:

- Increase of real and perceived passenger security
- High quality and frame rate transmission
- Intelligent super real-time transmission (live image check)
- 24h recording for deferred event analysis
- Detection of suspicious objects (e.g. luggage)
- Immediate activation of automatic transmission to the security control centre in case of alarms



# Application for public transport example: airports



## Components for security concepts

### 1 Visual control

#### of runways (1+2)

- motion detection of vehicles and persons

#### at public areas (e.g. shopping areas)

- Fast selection of individual objects and persons for improved situation analysis (3/4)

#### static object recognition in highly sensitive areas (4/5)

#### at the check-in desks (4/5)

#### Applicable components:



fixed cameras

FAC 940

Securing of public areas



pivoting cameras

SVD 206

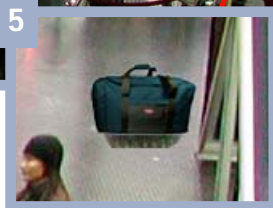
Securing of runways



SNK - Globe/Move

VD 1000

Detection of static / non-static objects and persons



Central control and administration via management system p.o.s.a.



erkanntes Kennzeichen: RH - RB 47  
erkanntes Nummernschild: RH RB 47



### 3 Driveway and/or car park management with identification of registration numbers

- Automatic identification of registration numbers for visitor and/or access management (6)

### 4 Radio based personal security system for optimal deployment and protection of security staff

- Protection of security staff with mobile emergency signal systems with individual alarm setting
- Visual personal protection with automatic localization, map display and image intrusion at the control station
- Integrated telephony and messaging features for secure communication

#### Applicable components:



DECT™ Security System DSS



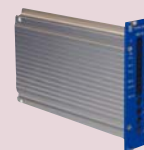
### 2 Alarm management and image recording in the control station via management system p.o.s.a.

- Continuous D1 digital image transmission (in real time)

- Permanent image recording at the network video recorder (NVR) for deferred object tracing (reconstruction of situations)

- Unlimited, evidence proof high-quality recording for optimal preservation of evidence

#### Applicable components:



VNS 102  
Digital transmission



HP ProCurve-Switch 5400  
LAN network connection



Network video recorder (NVR)  
Digital recording



Router R3000w  
High speed internet access

### 5 Digital pictures on monitor walls

- D1 representation with different image qualities (up to 25 fps)
- Flexible VGA video image representation via digital monitor at management system p.o.s.a.



#### Applicable components:



Digital monitor concept „multiview“